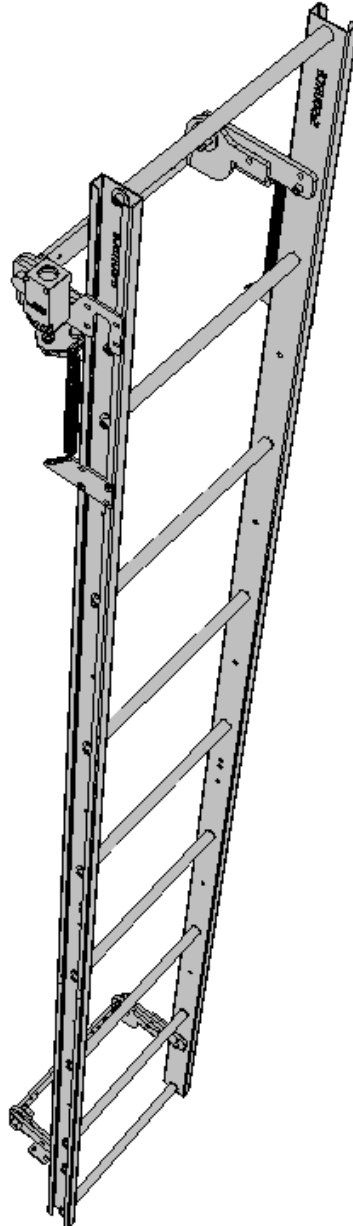


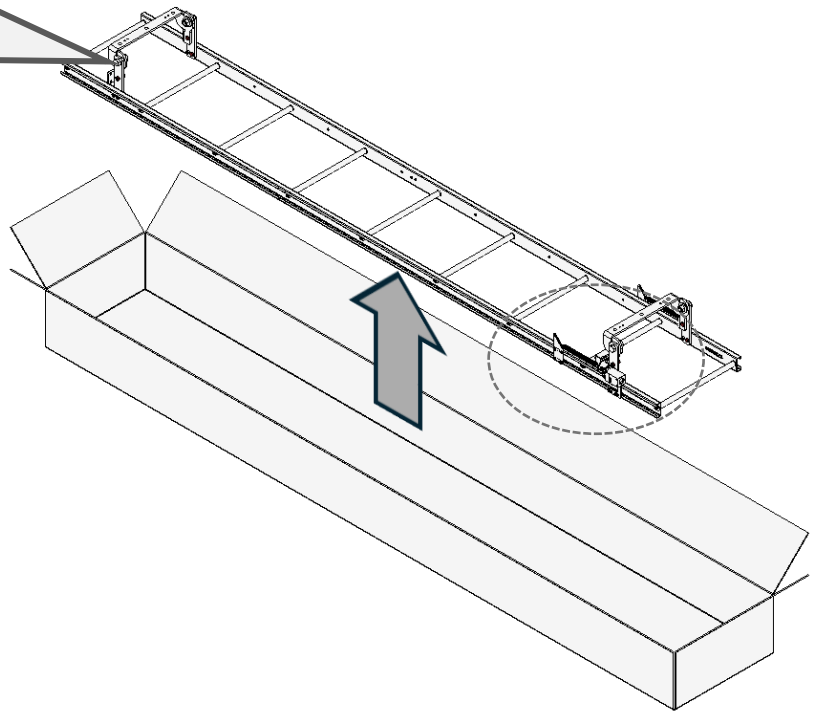
# Climber Pro

(Modular Pit Ladder, per Code 2022)



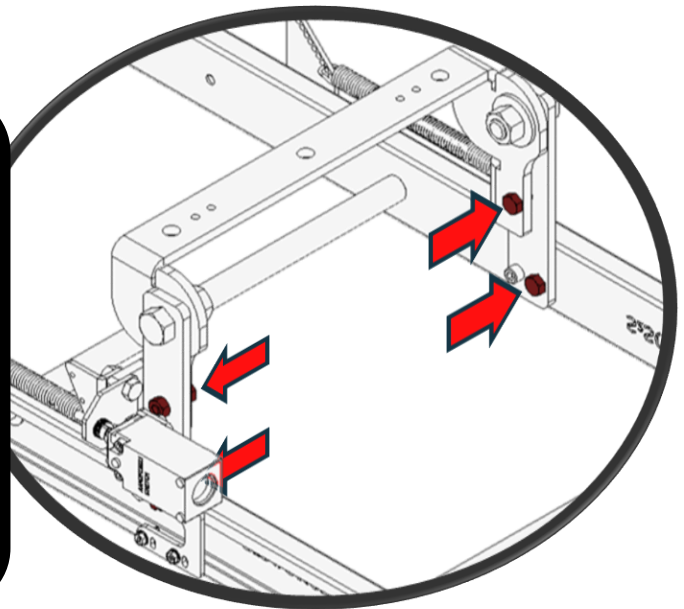
## Installation Manual

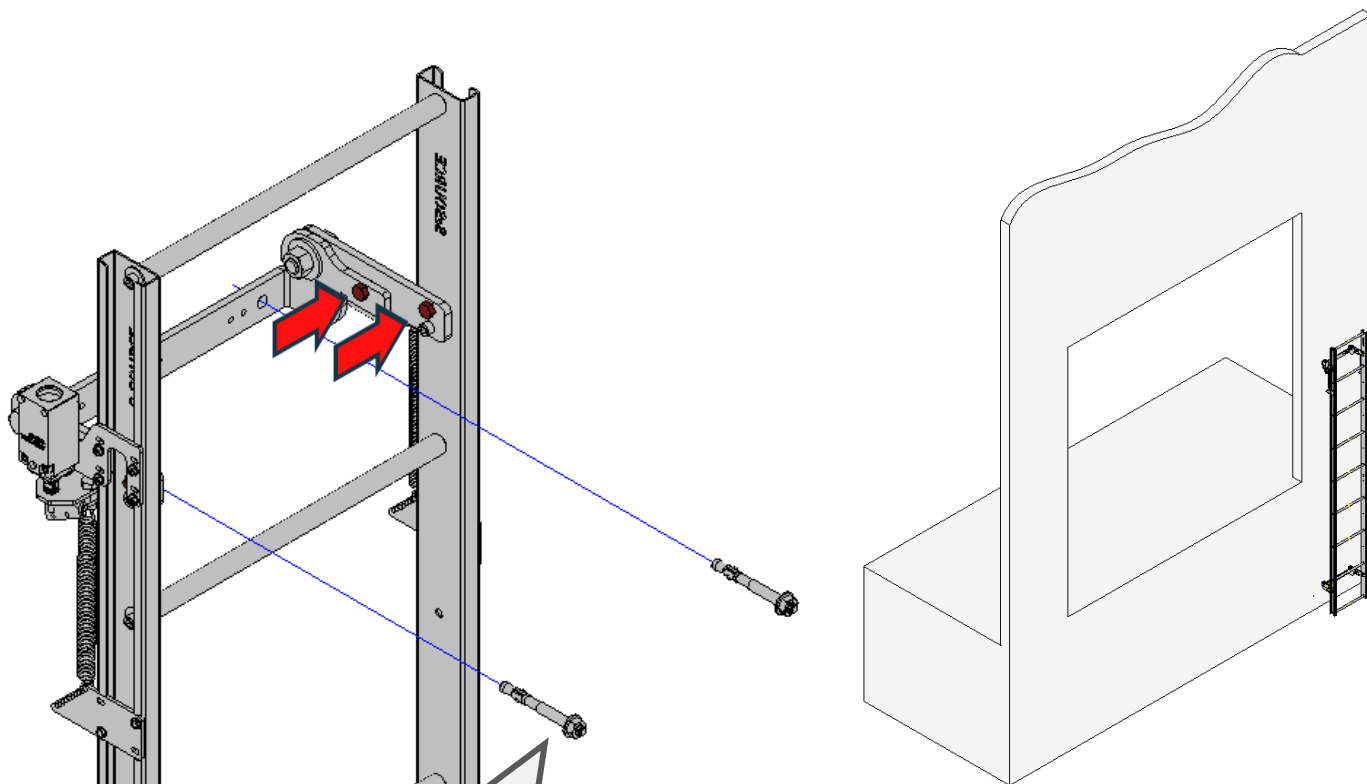
Remove Climber Pro from the shipping box/container as keeping shipping bolts marked red on the ladder



## ATTENTION

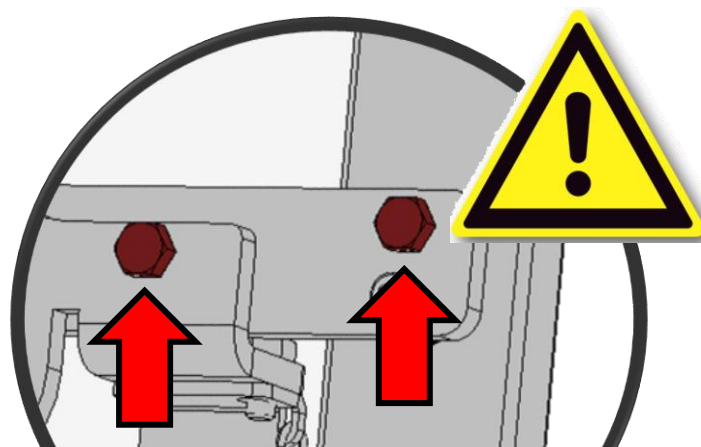
**DO NOT REMOVE** the 8X shipping bolts (4X on the upper side and 4X on the lower side) on each side (marked red) **UNTIL** the wall mount is completed.





Install Climber Pro at the desired location using DEWALT wall anchors (suggested).

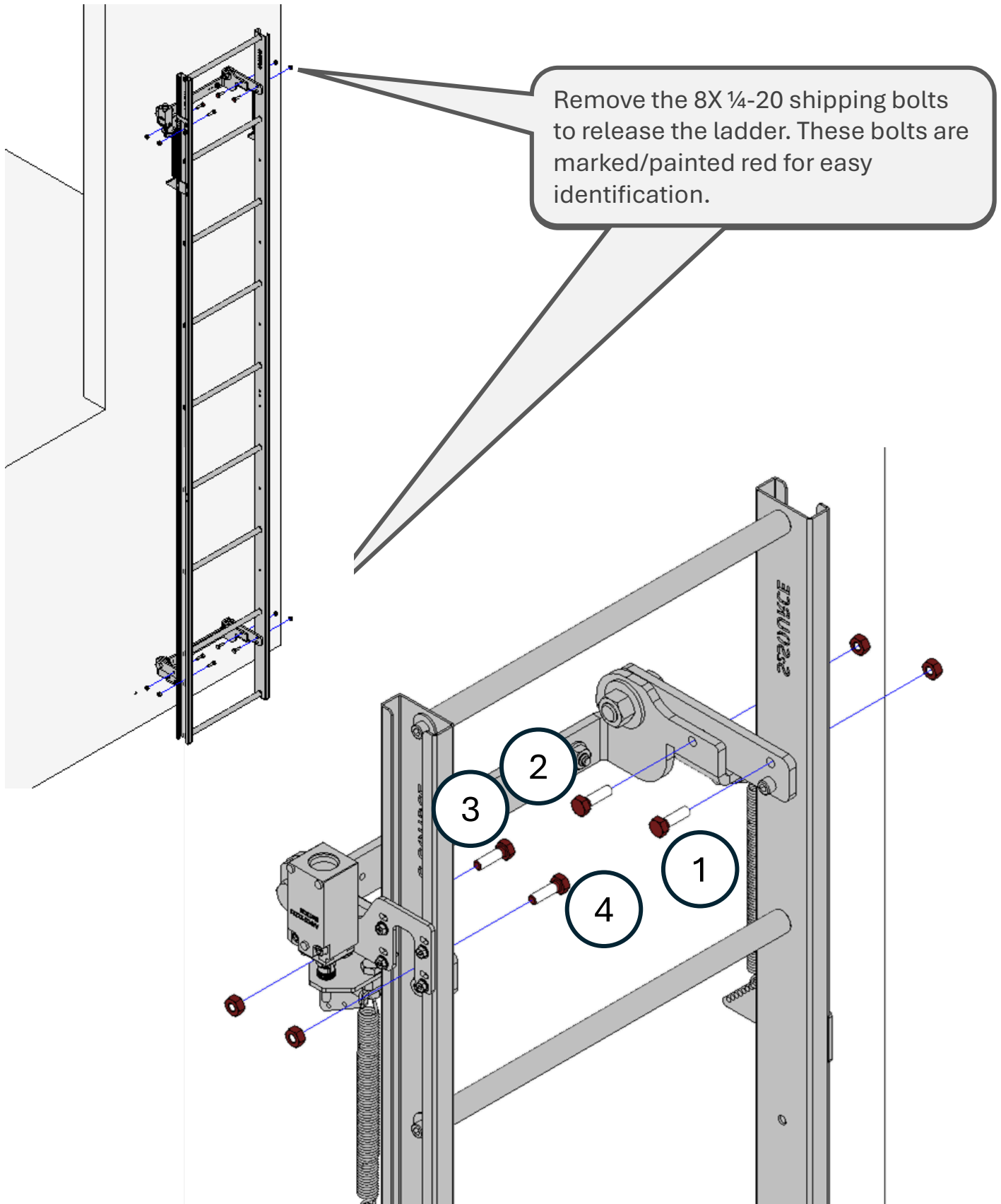
*Please note that wall anchors are not included in the package*



## ATTENTION

**DO NOT REMOVE** the 8X shipping bolts (4X on the upper side and 4X on the lower side) on each side (marked red) **UNTIL** the wall mount is completed.

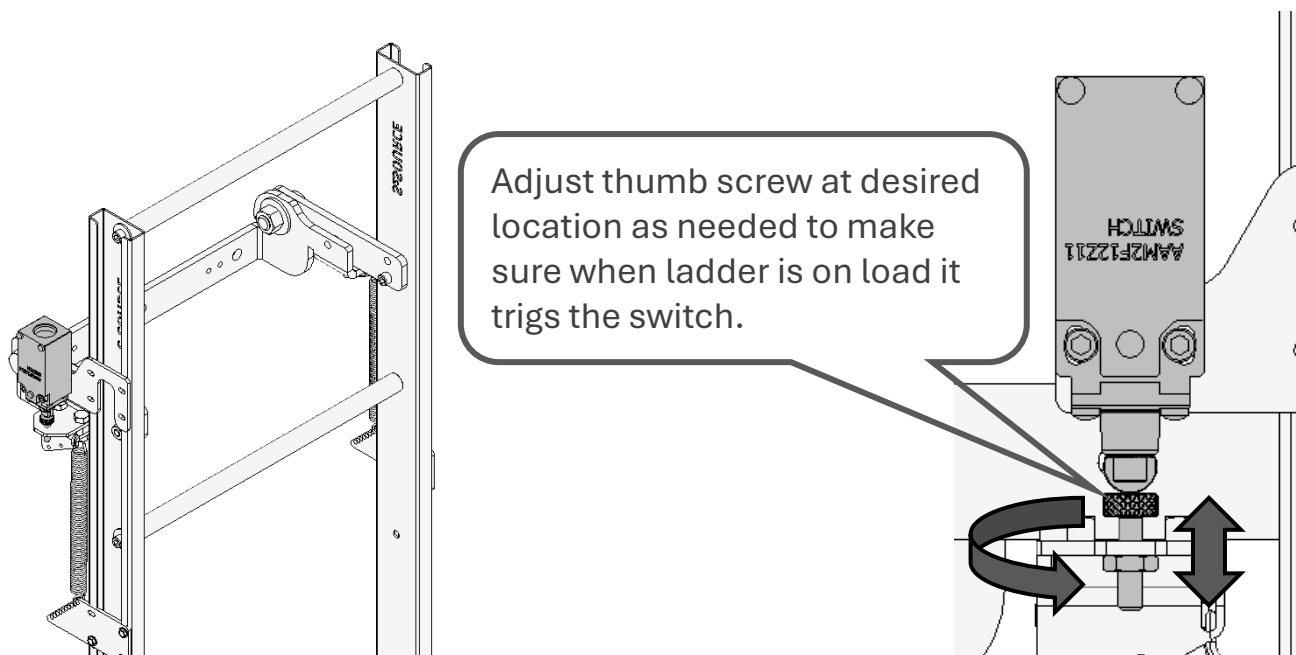
# RELEASING THE MECHANISM

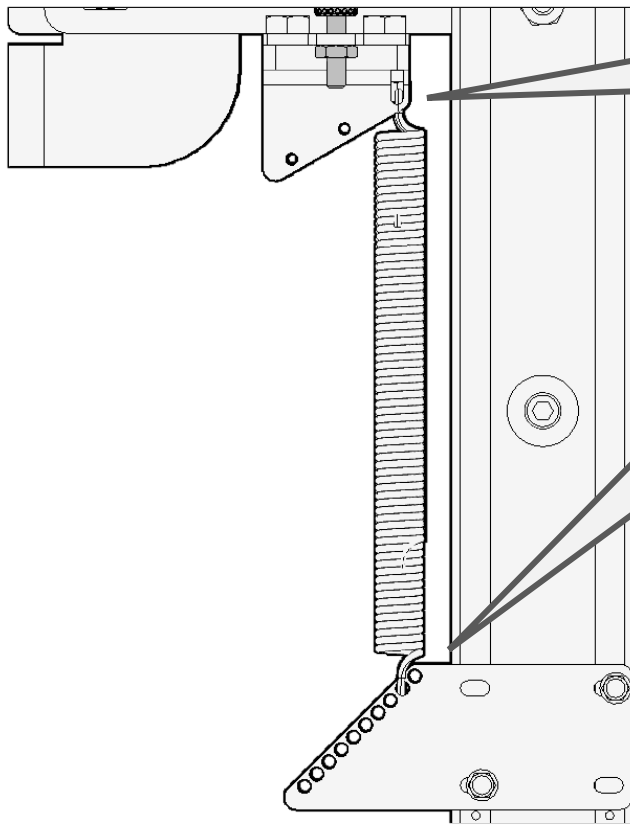


Adjust the ladder as needed. The ladder was previously tested and adjusted according to a 20-pound triggering point. However, varying environments or additional weights on the ladder (such as extra cables, signs, buttons, etc.) may necessitate further adjustment at the construction site.

There are two adjustments on this ladder **Switch height** and **Springs locations**

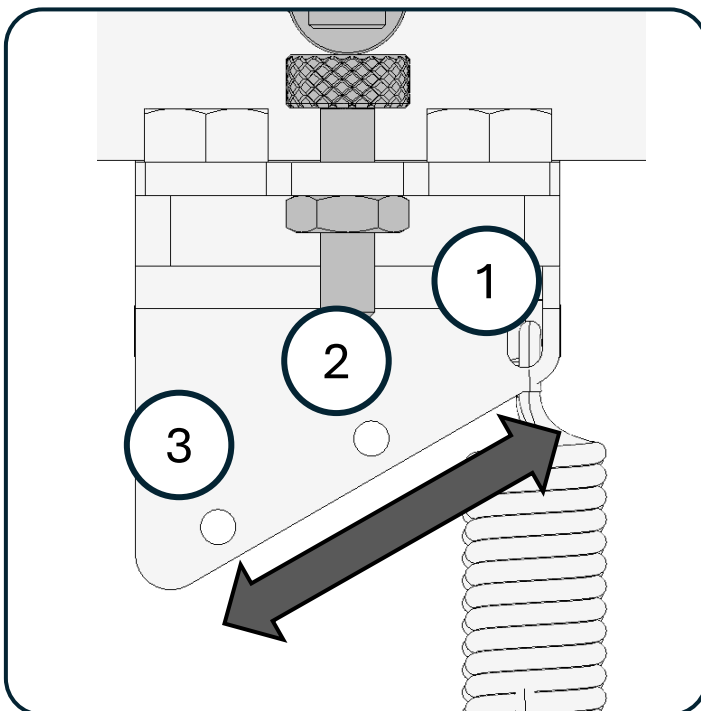
## Switch adjustment



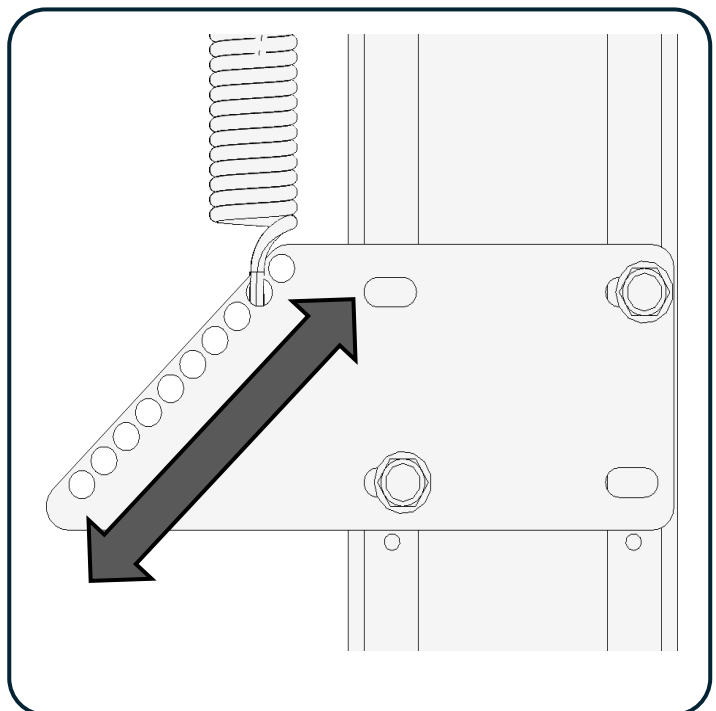


The position of the upper and lower sides can be adjusted as necessary to regulate tension.

Upper side



Lower side



This ladder is equipped with precision thrust bearings and precision washers at the joints. These joints may require lubrication as needed. For replacement parts, please contact your manufacturer.

